



CRANCHI YACHTS

COMPANY PROFILE 2024

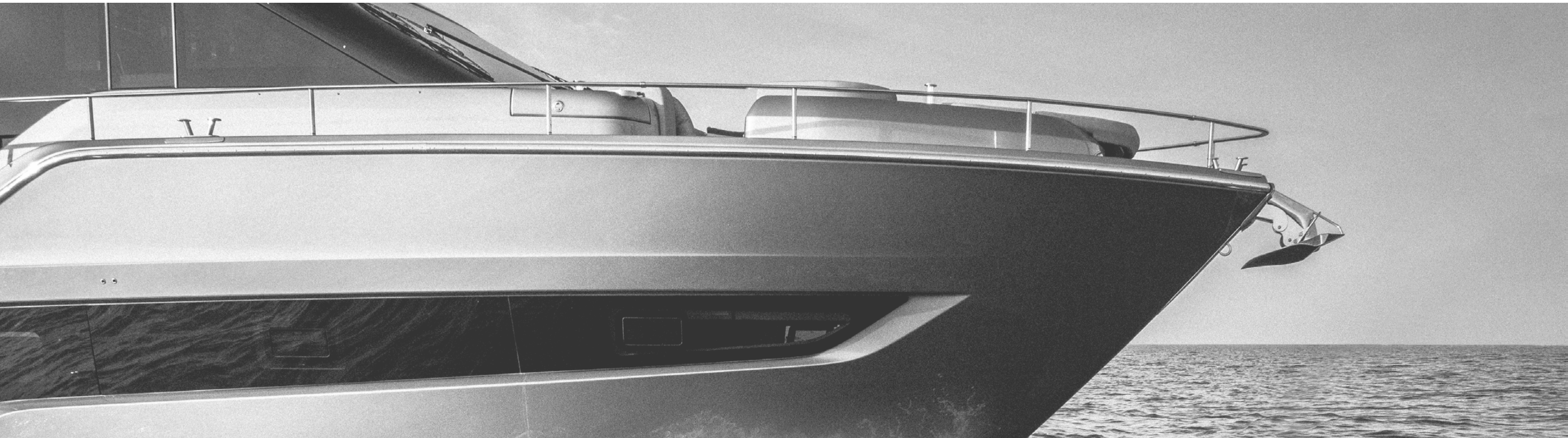


Company Profile

Cranchi Yachts is the Italian brand synonymous for technological excellence in the motor pleasure boat sector. The Shipyard has continued its independence since 1870.

Always at the top of the company, the Cranchi family shares the property with the Monzino family.

Today Cranchi Yachts produces yachts up to 25 meters, with cutting-edge materials and technologies that are a point of reference for the sector.



MILESTONES



Company Profile

1866

Giovanni Cranchi opens his first shipyard on the shores of Lake Como.

1870

Company registration: the history of Cranchi Yachts officially begins

1932

Two generations have passed: the Shipyard is now in Brienno, where **the mass production of wooden boats will begin.**

1970

Tullio Monzino enters into partnership with Aldo Cranchi, representative of the 4th generation of Cranchi.

The yard is now in Piantedo, and here it grows in space and production capacity. The production of fiberglass boats starts in the new factory.

Innovation never stops: in design, in the choice of materials, in production processes.

1993

Creation of Cantiere Nautico Cranchi USA LLC, a company 100% controlled by Cantiere Nautico Cranchi Spa, with the aim of developing the brand's activities throughout the American continent.

1997

The Marine Test Center, a 3,000 m² dock for water tests of the entire Cranchi range, is inaugurated in Friuli.

2006

The Shipyard is transformed **into a capital company.**

2009

Seventy Plant 4, the factory for the production of pleasure boats with the highest level of automation in the world, comes into operation. The assembly lines of the new factory allow the mass production of yachts up to 80 feet.

2020

150 years of history. Cranchi Yachts celebrates the extraordinary anniversary with the presentation of its new flagship, Cranchi Settantotto.

2022

Cranchi Cares Sardinia enters into business: a new facility dedicated to refitting, pre-delivery and dry storage.



MISSION



Company Profile

Cranchi Yachts' activity is aimed at the production of high quality motor boats with excellent marine performance, reliability and high safety standards.

Strengthened by a history and a centuries-old tradition and with an eye always projected towards the future, the company aims to achieve constant and long-term growth.

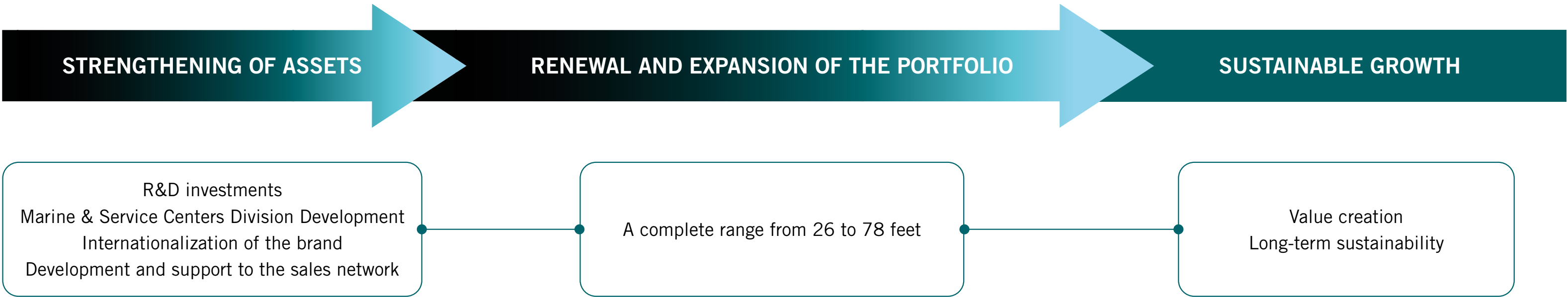
Sustainable growth, to be achieved through the offer of excellent quality yachts, targeted investments in innovation and research and the development of strong and lasting partnerships with suppliers and with all those who contribute to the production and distribution of products.



STRATEGY



MASTERS OF OUR FUTURE



STRATEGY



Company Profile

TOP QUALITY

Quality is the key to conquer new market shares and to retain customers.

The factors that ensure the quality and reliability of Cranchi models:

- a highly automated production system
- healthy, functional and tidy work environments
- plants with controlled humidity and temperature to guarantee the best working conditions
and the best structural performance of the products
- detailed planning of each production phase
- involvement of management and skilled labor



STRATEGY



Company Profile

TECHNOLOGICAL EXCELLENCE

Over the years the Shipyard has developed a production model that is unmatched in the yachting sector.

A competitive advantage constantly increased through:

- investments in facilities and technologies
- research into innovative and increasingly sustainable materials
- collaboration with partners and suppliers involved in the development and testing of new technological solutions



STRATEGY



Company Profile

DESIGN AND ENGINEERING

The shipyard's commitment is focused at the same time on design and engineering **to efficiently create yachts with great appeal** and original features capable of responding ideally to new market needs.



ENVIRONMENTAL SUSTAINABILITY

For Cranchi Yachts, environmental sustainability is a priority. A natural attitude for those who have always turned their thoughts to the future and build products that live in contact with the sea and natural elements.

The Shipyard invests to improve the quality of the work environment, the performance of the boats and their eco-compatibility:

- **sustainable production processes**
- **greater durability of the boats**, with drastic reduction of disposable materials
- **reduction of fuel consumption** and experimentation in the use of alternative energy



STRATEGY



Company Profile

A WIN-WIN PARTNERSHIP MODEL

The Shipyard favours long-lasting relationships with its technical and commercial partners involving them in its growth path. According to a model of strong mutuality and maximum loyalty, Cranchi Yachts undertakes to support the growth of its partners by stimulating and promoting their activities, suggesting new opportunities and offering to accompany the partners in the implementation of their strategies and in the development of the most innovative solutions.

The importance in financial, industrial and know-how terms is always for the benefit of the Shipyard and its partners.



PRODUCT PORTFOLIO



Company Profile

THE FLAGSHIP INSPIRED COLLECTION

FLAGSHIP	SETTANTOTTO 78
FLYBRIDGE	SESSANTASETTE 67
	SESSANTADUE 62 <small>NEW 2024</small>
	CINQUANTATRE 53 <small>NEW PROJECT</small>
CORSA	SESSANTASETTE 67 CORSA <small>NEW 2024</small>



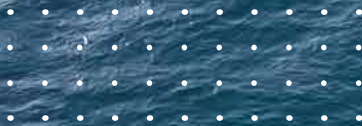
THE HARD TOP & SPORT CRUISER COLLECTION

SOFT TOP	60 ST
HARD TOP	60 HT
	M44 HT
SPORT CRUISER	Z35



THE LUXURY TENDER COLLECTION

LUXURY TENDER	A62 LUXURY TENDER <small>NEW PROJECT</small>
	A46 LUXURY TENDER
	E26 CLASSIC
	E26 RIDER
DAY CRUISER	E30 ENDURANCE



WATCH THE VIDEO



FACILITIES MANUFACTURING & OPERATIONS



Company Profile

The production of Cranchi yachts is totally Made in Italy and is concentrated in two factories in Lombardy.



PIANTEDO PLANT 1

Production boats up to 44 feet
Headquarters
Research Development Department
Purchase Department
Spare Department

Total area: 70,000 m² / Covered area: 36,000 m²



SEVENTY PLANT 2

Production of boats up to 80 feet

Total area: 140,000 m² / Covered area: 30,000 m²

FACILITIES / TEST CENTRE



Company Profile

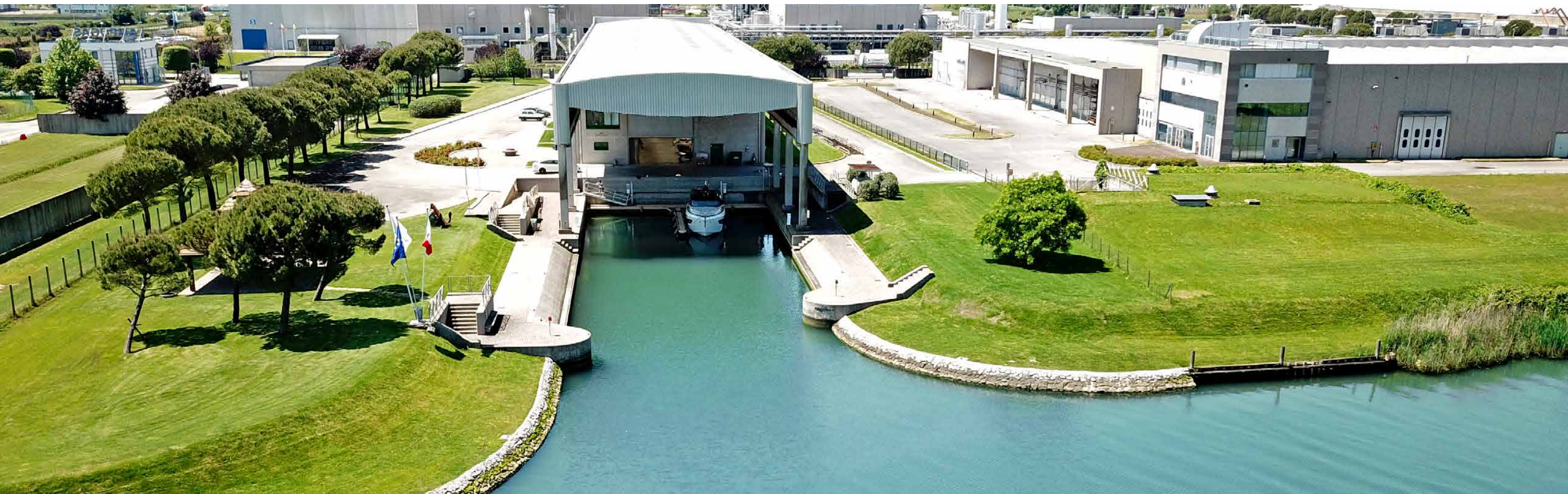
MARINE TEST CENTRE SAN GIORGIO DI NOGARO (UD)

Internal Test Centre
Showroom
Customer Lounge
Cranchi Atelier (Customisation programme)

Sea trials: the whole range, all year round.

The flagship among the pre-sales services of Cranchi Yachts, the Marine Test Center offers the opportunity for dealers and their customers to try out the range models in the water in a private and exclusive context, easily accessible from Venice airports and Trieste.

Total area: 75,000 m² / Covered area: 3,000 m² / Water area: 1,500 m²



CRANCHI CARES ADRIATIC SEA



Company Profile



DARSENA BELLAGIO

Refitting Centre
Pre Delivery Inspection
Delivery Centre
Dock

The facility known as Darsena Bellagio is a modern marina that is open all year round, offering video surveillance, mooring assistance, toilets and showers. It has over 100 berths, with dock fingers with columns for electricity, water and a fire-extinguishing system. The Darsena marina is also equipped with travel lift (100 tons), special trolleys for moving hulls between the yards and the hangars and a large covered area spanning 2,400 m² which is dedicated to refitting services and customer support.

Total area: 32,000 m² / Covered area: 5,000 m² / Water area: 12,200

CRANCHI CARES SARDINIA



Company Profile



CALA SACCAIA

Refitting Centre

Pre Delivery Inspection

Delivery Centre

The new Cranchi Cares facility is located in Cala Saccaia, very close to Olbia and Sardinia's Costa Smeralda.

A team of technicians trained by the Cranchi shipyard operates in the facility with access to the best modern equipment, including travel lift (120 tons) and special trolleys for the safe handling of hulls.

Total area: 15,000 m² / Covered area: 4,500 m² / Water area: 3,500 m²

GLOBAL BRAND



Company Profile

50+

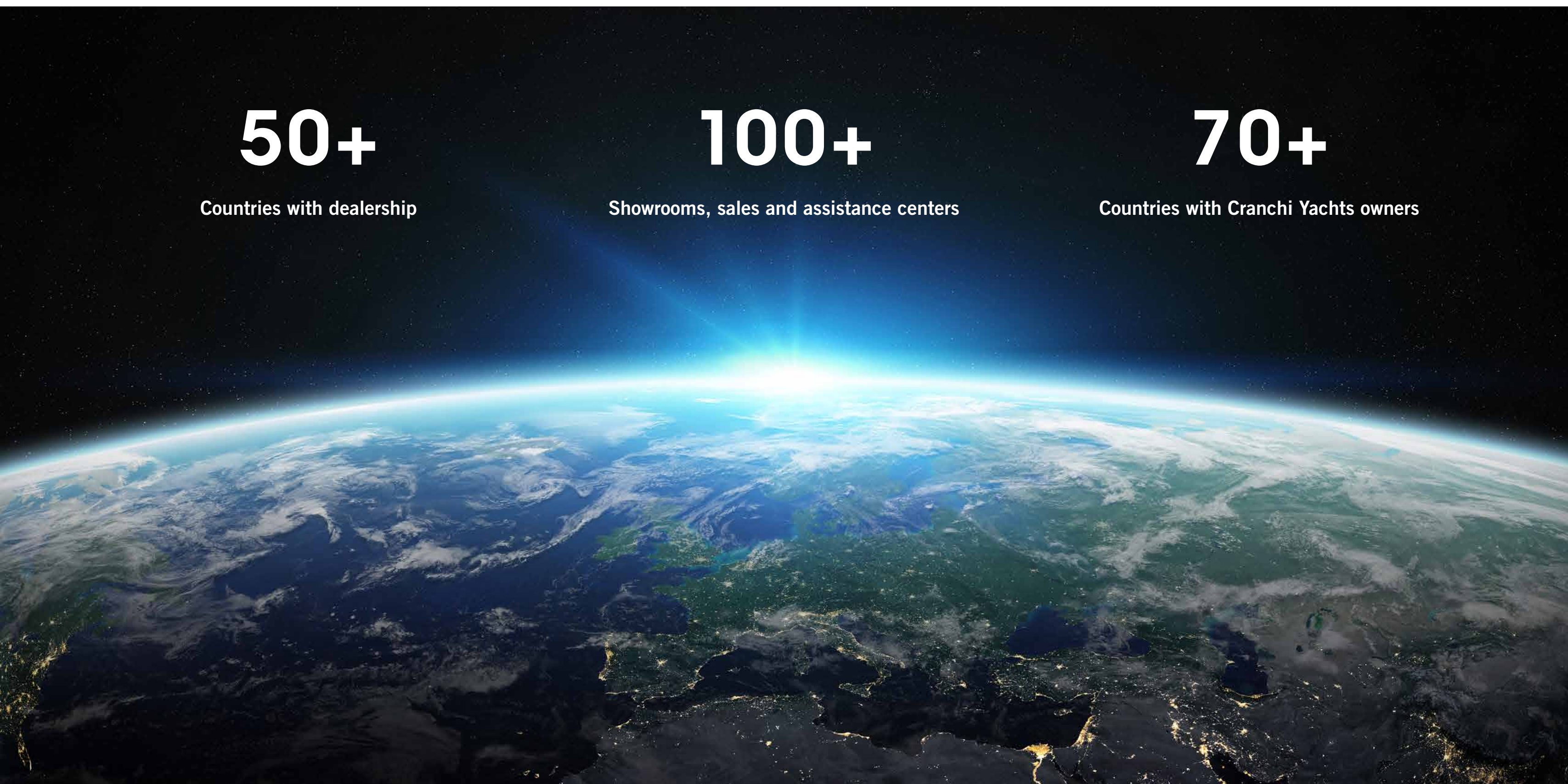
Countries with dealership

100+

Showrooms, sales and assistance centers

70+

Countries with Cranchi Yachts owners





CANTIERE NAUTICO CRANCHI® S.p.A.

HEADOFFICES & PIANTEDO PLANT 1

23010 PIANTEDO (SO) - Via Nazionale, 1319 - Italia

Tel +39 0342 683 359

Share capital / Capitale sociale i.v. Euro 5.000.000

Intrastate VAT. / C.F. - P.IVA 00070470141

sales@cranchi.it

WWW.CRANCHI.COM



FOLLOW US



#cranchiyachts

#cranchilovers

#italianexcellence