



YACHT M<sup>A</sup>STERS  
M O N A C O

M/Y MONACO DREAM  
CRANCHI MEDITERRANEE 43 (2008)  
EUR 180,000 (VAT Paid)



## M/Y MONACO DREAM



## BROKERS COMMENTS

Turn-key ready and built for leisure, this 2008 Cranchi Mediterranee 43 HT is a sleek and stylish hardtop cruiser, perfect for both day trips and short weekend trips. VAT paid and fairly maintained with a clean service record, she is an excellent opportunity for those seeking a to secure the summer with a premium day boat yacht at an attractive price.

Powered by twin Volvo Penta IPS 600 engines (2x435HP), she delivers smooth handling, efficient fuel consumption, and a thrilling top speed of 35 knots. A hydraulic gangway, fully teak-laid cockpit, and movable table that doubles as a sun pad enhance outdoor living, while the retractable glass roof in the cockpit ensures a seamless transition between open-air freedom and enclosed comfort.

- **Interior Living in** The luminous interior features an open-plan saloon and fully equipped galley, creating a spacious and inviting atmosphere. Accommodation includes two well-appointed cabins, two bathrooms, comfortably sleeping up to four guests.
- **A standout feature** is the aft deck with a lava stone BBQ, ideal for alfresco dining while enjoying breathtaking views. Equipped with premium extras such as a newly installed Raymarine navigation suite, air conditioning, and ample storage, she is built for luxury cruising.
- **Located in Monaco** and priced at an attractive price , this Cranchi 43 HT offers a rare chance to own a well-maintained, high-performance yacht with Italian craftsmanship. Don't miss this opportunity schedule a viewing today!

M/Y MONACO DREAM

SPECIFICATIONS


 EUR 180,000  
(VAT paid)




Build  
2008, Cranchi Yachts



Length  
13.80m (45.27 ft.)




Width  
4.50m (14.9ft.)




Draft  
1m (3.28ft.)



Gross tonnage  
10,500 kg



Cruising / Max. speed  
28kts/35kts




Range  
Approx 290 nm



Flag  
Monaco



Location  
Monaco




Class  
CE Class B



Exterior Design  
Cranchi Yachts




Interior Design  
Cranchi Yachts



Construction Material  
GRP



Propulsion  
Pod Drive




Crew  
n/a



Guests Sleeping / Max. Capacity  
6



Cabins/Heads  
3 / 2



Engines / Hours  
Volvo Penta 2XIPS 600 (2X435HP)



Generators  
Generators Fischer Panda El



## M/Y MONACO DREAM



## SPECIAL FEATURES

- FULLY EQUIPPED KITCHEN & AFT DECK WITH BBQ
- FULLY TEAK LAID COCKPIT
- CLEAN SERVICE RECORD
- OPEN SPACE SALOON & GALLEY
- 2x VOLVO IPS 600 435HP ENGINES
- HYDRAULIC GANGWAY
- LUMINOUS INTERIOR COLOUR SHADE
- HYDRAULIC COCKPIT TABLE DOUBLES AS A SUN PAD
- RETRACTABLE GLASS ROOF IN COCKPIT
- ONLY 300 ENGINE AND GENERATOR HOURS



M/Y MONACO DREAM

## AFT DECK



Spacious Aft Deck



M/Y MONACO DREAM

# MAIN HELM



Main Helm





M/Y MONACO DREAM

## MAIN SALON



Main Salon



M/Y MONACO DREAM

MASTER CABIN



Master Bedroom w Large Double Bed



Ensuite Bathroom



M/Y MONACO DREAM

# GUEST CABIN



Spacious Aft Cabin



Aft Cabin Sitting Area & TV



M/Y MONACO DREAM

## DAY HEAD & GUEST CABIN BATHROOM



Full size Guest Bathroom & Shower



M/Y MONACO DREAM

GALLEY & BBQ AMENITIES



Lava Stone BBQ



Galley w. Full size Fridge & Freezer





M/Y MONACO DREAM

## BOW LOUNGE

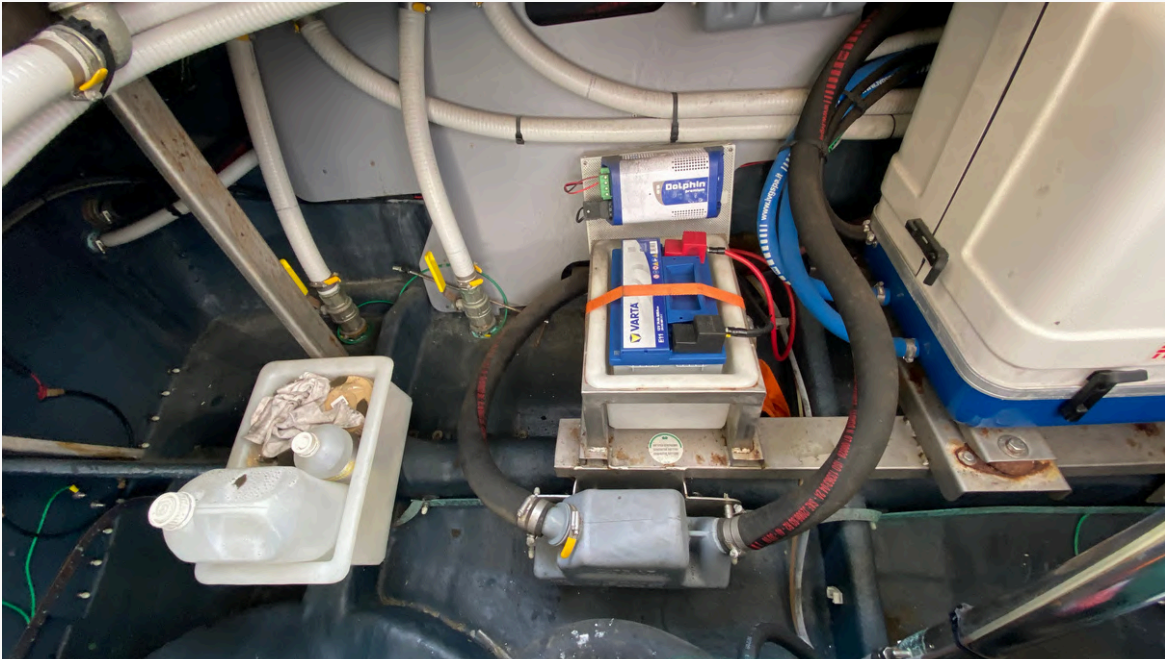


YACHT MASTERS  
M O N A C O



M/Y MONACO DREAM

MACHINERY AND UTILITIES





M/Y MONACO DREAM

## GENERAL ARRANGEMENT





## Electrical Equipment

- Repeater on the Flybridge & Third
- Helm Station on the Aft Deck
- IPS Pod Drive System for Improved Handling & Fuel Efficiency
- Generator & Air Conditioning for Ultimate Comfort
- Underwater Lights for a Stunning Nighttime Look

## Comfort

- Aft Deck with Lava Stone BBQ
- Fully Teak-Laid Cockpit
- Open Space Saloon & Galley
- Luminous Interior with Elegant Colour Shades
- Movable Table that Doubles as a Sun Pad
- Hydraulic Gangway for Easy Boarding

## Accommodation

- Open-Plan Saloon & Fully Equipped Galley
- Retractable Glass Roof in the Cockpit for an Open-Air Feel
- Three-Cabin Layout
- Master Cabin (Forward): Double bed with en-suite facilities
- Starboard Guest Cabin: Double bed
- Portside Cabin: Twin beds
- Two Bathrooms (One shared between guest cabins)



# YACHT M<sup>A</sup>STERS

M O N A C O



## YOUR BROKER

KUSHAGRA SHARMA

SALES BROKER

[ks@yachtmastersmonaco.com](mailto:ks@yachtmastersmonaco.com)

---

16 Quai Jean-Charles Rey - MC 98000 Monaco  
T +377 99 99 22 29    M +33 7 58 03 73 15

[www.yachtmastersmonaco.com](http://www.yachtmastersmonaco.com)

**Disclaimer:** As yacht brokers, we provide the information in this brochure for general guidance only. While we strive for accuracy, the details regarding availability, specifications, and pricing are subject to change and depend on negotiations with yacht owners, among other considerations. We do not make any warranties, expressed or implied, concerning the completeness, reliability, or suitability of the information provided. The yacht specifications and features may vary, and all images are for illustrative purposes only. This brochure does not constitute a contractual offer. All terms must be confirmed in writing. Actual terms, availability, and conditions may vary. Prospective buyers are advised to conduct their own due diligence and seek professional advice before making any decisions based on this information.